



— घर आपका प्रयास हमारा —

WWW.MAGADHINFRATECH.IN



MAGADH
— INFRA TECH —

Dedicated to developing the real estate

Enhance your urban life



Rera No : BRERAP05516-2/230/R-1800/2024

Call Us For More Enquiry : 8292635888, 8292645888

Sky City, Mastalipur, Gaya - Nawada Road, Manpur,, Gaya, India, Bihar

MAGADH INFRATECH

Magadh Infratech, established in 2019, is a leading real estate company in Gaya, Bihar. Our flagship project, Sky City, embodies excellence, innovation, and sustainability.

We blend modern aesthetics with traditional values for homes that resonate with the region. We aim to enrich lives with a focus on quality craftsmanship and customer satisfaction.

Magadh Infratech is synonymous with integrity and reliability and is committed to creating enduring landmarks.



Master Plan



2 BHK PLAN

Carpet Area 726 Sq.Ft.





Project Highlights



Swimming Pool



Children Park



24 hrs Security



Water Supply



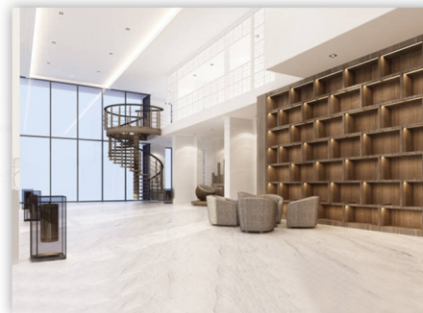
Electricity



Badminton Court



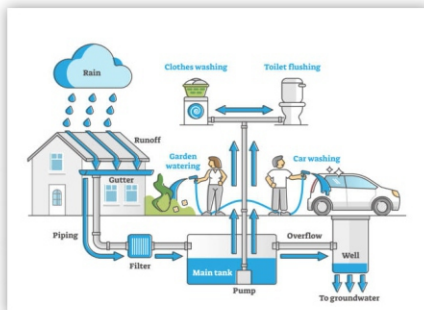
Jogging Track



Club House



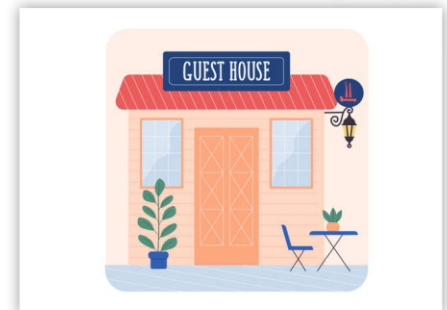
Temple



Water Harvesting System



Mini Clinic



Guest House

SKY CITY

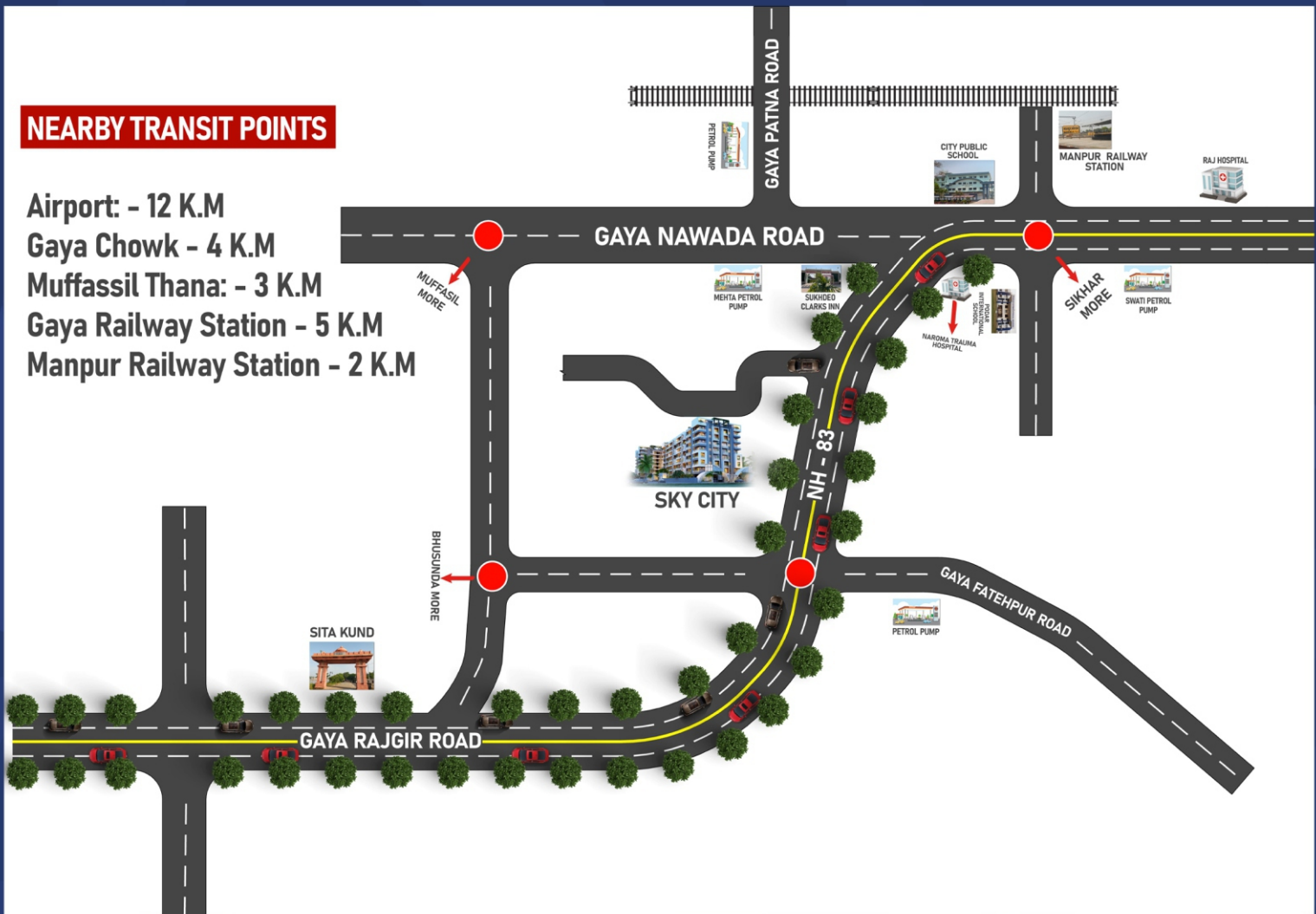


— घर आपका प्रयास हमारा —
WWW.MAGADHINFRATECH.IN

Location Map

NEARBY TRANSIT POINTS

Airport: - 12 K.M
Gaya Chowk - 4 K.M
Muffassil Thana: - 3 K.M
Gaya Railway Station - 5 K.M
Manpur Railway Station - 2 K.M



Call Us For More Enquiry : 8292635888, 8292645888

Sky City, Mastalipur, Gaya - Nawada Road, Manpur,, Gaya, India, Bihar

DISCLAIMER: The floor plan shown here are a possible furniture arrangement and utilization of various spaces on the basis of sanctioned plan for ease of understanding and it must be read in conjunction with sanctioned plans. Nomenclature of various rooms and spaces in these layouts/plans is just a suggestion and may not be the same as in the sanctioned plans. Purchase decision should be made on the basis of sanctioned plans, proposed sanctioned plans, all permissions etc. A copy of detailed sanction plans and layout can be viewed in our corporate office. Appliances, electronics, furniture, fixtures etc. are not included with the flat. Plumbing layout may be subject to change. All room dimensions shown are before plastering i.e. unfinished wall to unfinished wall. Bathroom dimensions are stated without considering dado tiles and any ledge wall.